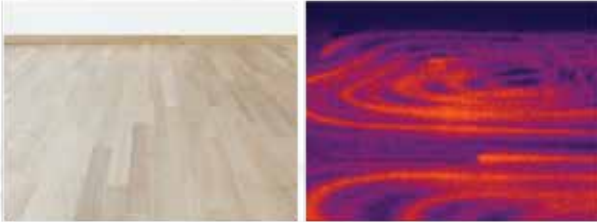


SEE THE UNSEEN™



REFRIGERANT LEAKS



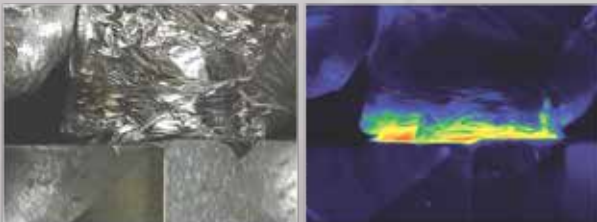
DEFECTIVE FLOOR HEATING



FAILING REVERSING VALVE



LOOSE CONNECTIONS



INSULATION LOSS



DESIGNED AND MANUFACTURED
— IN —
SANTA BARBARA, CALIFORNIA
WITH GLOBAL COMPONENTS

Seek™

thermal

**AFFORDABLE, HIGH-PERFORMANCE
THERMAL IMAGING CAMERAS
FOR HVAC/R**



Seek Thermal Australia | New Zealand Distributor

E: admin@ssprod.com.au W: www.ssprod.com.au

A: 2/7 Quantum Link, Wangara WA 6065 T: 08 9303 4580



Reveal

Handheld Thermal Camera with 32,136 Pixels



CompactPRO™

Smartphone Thermal Camera with 76,800 Pixels



RevealPRO™

Handheld Thermal Camera with 76,800 Pixels



300 Lumen LED / Light
Works Day & Night

Thermal Sensor	206 x 156
Field of View	36 degrees
Temperature Range	-40F to 626F -40C to 330C
Frame Rate	> 15 Hz

KEY FEATURES

Advanced Thermography Tools | Temperature measurement with automatic detection.

Long-Lasting Rechargeable Battery | Up to 10 hours of continuous thermal imaging.

Removable Storage | Save directly to removable 512MB Micro-SD card.



Waterproof Case
Works Day & Night

Thermal Sensor	320 x 240
Field of View	32 degrees
Temperature Range	-40F to 626F -40C to 330C
Frame Rate	> 15 Hz

KEY FEATURES

Pro Thermography Tools | Temperature measurement with automatic and full manual control.

Focusable Lens for Quick Identification | Aim and focus for the sharpest image.

No Batteries Required | Up to 4 hours of continuous thermal imaging powered by your smartphone.

Capture and Share Photos & Video | Easily document and share from your smartphone or tablet.

Compact

Smartphone Thermal Camera with 32,136 Pixels



Waterproof Case
Works Day & Night

Thermal Sensor	206 x 156
Field of View	36 degrees
Temperature Range	-40F to 626F -40C to 330C
Frame Rate	< 9 Hz

KEY FEATURES

Advanced Thermography Tools | Temperature measurement with automatic detection.

Focusable Lens for Quick Identification | Aim and focus for the sharpest image.

No Batteries Required | Up to 4 hours of continuous thermal imaging powered by your smartphone.

Capture and Share Photos & Video | Easily document and share from your smartphone or tablet.



300 Lumen LED / Light
Works Day & Night

Thermal Sensor	320 x 240
Field of View	32 degrees
Temperature Range	-40F to 626F -40C to 330C
Frame Rate	> 15 Hz

KEY FEATURES

Pro Thermography Tools | Temperature measurement with automatic and full manual control.

Durable & Portable | Rugged, rubberized casing with Corning® Gorilla® Glass.

Long-Lasting Rechargeable Battery | Up to 4 hours of continuous thermal imaging.

Capture Photos for Reports | Save directly to 4GB internal memory.

4X Digital Zoom | Take a closer look from a safe distance.

