

RevealPRO™

**AFFORDABLE, HIGH-PERFORMANCE
HANDHELD THERMAL IMAGING**

KEY CAMERA SPECS

- 320 x 240 Thermal Sensor
- 32° Field of View
- 40 to 626°F Temperature Measurement
- 12 inches to 1,800 feet Distance
- Works Day & Night
- 300 Lumen LED Flashlight

Seek
thermal

thermal.com



RevealPRO is our most advanced handheld thermal imaging camera yet. Highly durable and easy to use, RevealPRO combines a high-performance 320 x 240 thermal sensor with intuitive software to help you work smarter. And, when you need it, a powerful 300-lumen LED light is available at the touch of a button. Offering adjustable thermal span, level, and emissivity settings, the RevealPRO delivers unprecedented high-resolution thermal imaging and software capabilities available at this price.

Designed and Manufactured in Santa Barbara, California with Global Components.

Product Name:	Seek RevealPRO
Product Type:	Thermal Imaging Camera
Seek RevealPRO Color: Carbon Fiber	UPC: 855753005655 Part Number: RQ-AAAX
Export Regulations	Subject to US EAR Export Regulations.

Single Unit	
Included in the box:	<ul style="list-style-type: none">• Seek RevealPRO• Wrist Lanyard• Welcome Guide• USB Cable
Device Dimensions (H x W x D)	5 x 2.4 x 1.2 inches
Device Weight:	6.25 ounces
Box Dimensions (H x W x D)	7 x 3.75 x 1.75 inches
Box Weight:	13.025 ounces
Master Pack	
Included in the Master Pack	80 Units
Master Pack Dimensions	20 x 15 x 16 inches
Master Pack Weight	65 pounds

KEY FEATURES

320 x 240 High-Resolution Thermal Sensor

76,800 temperature pixels for maximum image clarity and sensitivity

Adjustable Emissivity

Calibrate for reflective surfaces when accuracy is critical

Wide, 32-Degree Field of View

Easily scan a large area to identify potential hazards in seconds

Long-Lasting Rechargeable Battery

Up to 4 hours of continuous thermal imaging in Normal MODE

See Through the Dark. Light Optional.

300 lumen LED flashlight available at the touch of a button

Best-in-Class Object Temperature Range

Measure temperatures from -40° to 626°F

BENEFITS & USES

Accurately Inspect Mechanical and Electrical Equipment

Diagnose and assess the problem source quickly

Safely Monitor Hazardous Environments

Evaluate potentially dangerous situations from a safe distance

See More Thermal Detail Where You Need it Most

Level and span controls let you isolate and capture the details that matter

Durable, All-In-One Device

Rugged, rubberized casing with Corning® Gorilla® Glass and intuitive controls go and work where you do

Time of Day Won't Slow You Down

Safely examine any job site in daylight or total darkness

Easily Document and Share

Save thermal images directly to the 4GB internal hard drive

TECHNICAL SUMMARY

SPECIFICATIONS	DESCRIPTION
Thermal Sensor	320 x 240 (76,800 pixels)
Detection Distance	12 inches to 1,800 feet
Field of View	32 Degree FOV
Temperature Range	-40°F to 626°F
Frame Rate	>15 Hz FastFrame in Normal MODE
Focus	Fixed Focus
Flashlight	300 Lumen LED
Display	2.4" Color with Corning® Gorilla® Glass
Microbolometer	Vanadium Oxide
Thermal Sensitivity	< 70 mK
Spectral Range	7.5 - 14 Microns
User Interface	Self-Contained Device with 3 Button Navigation
Temp. Display Scale	Fahrenheit, Celsius, or Kelvin
Color Palettes	9 Options (Grayscale and High-Contrast)
Storage Media	4GB Internal Drive (>4,000 images)
Battery	Up to 4 Hours Thermal Imaging in Normal MODE

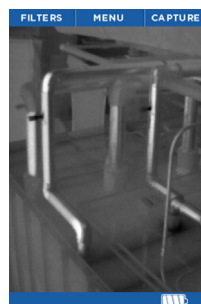
For support and user guides
visit support.thermal.com

300 LUMEN LED LIGHT



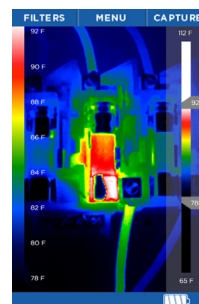
Seek RevealPRO combines powerful thermal insight and a high-performance LED flashlight in one durable device.

USER INTERFACE



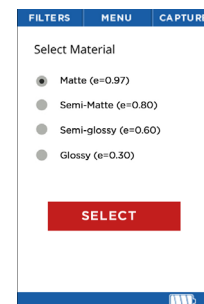
PHOTOS

Capture and save thermal images directly to the internal 4GB hard drive



LEVEL & SPAN

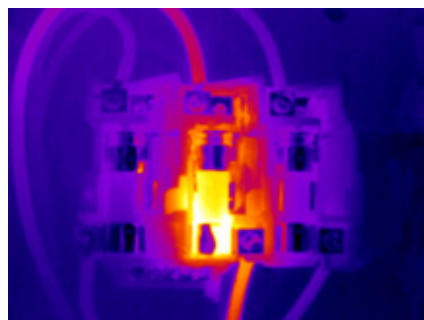
Isolate and capture the thermal details that matter



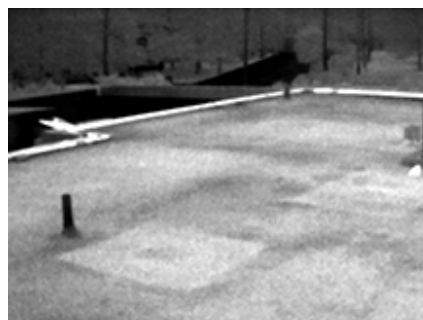
EMISSIONITY

Calibrate for reflective surfaces when accuracy is critical

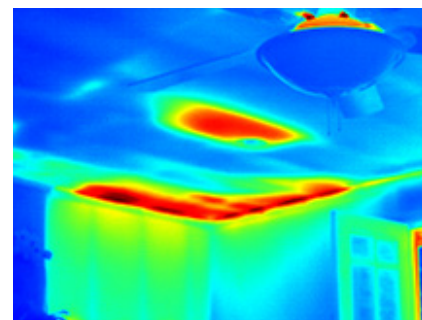
THERMAL APPLICATIONS



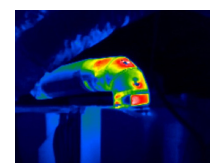
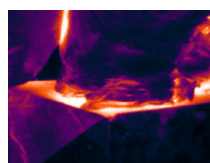
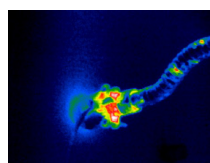
ELECTRICAL INSPECTION




ROOF INSPECTION



INSULATION & HVAC INSPECTION



Seek more at  **SEEK** SECURITY PRODUCTS **Seek Thermal - Australia | New Zealand Distributor**
E: admin@ssprod.com.au W: www.ssprod.com.au
A: 2/7 Quantum Link, Wangara WA 6065 T: 08 9303 4580

111 Castilian Drive, Santa Barbara, CA 93117 USA

Seek Thermal engineers, designs and manufacturers high quality thermal imaging products and core platforms for consumer, commercial, and heat sensing IoT data applications. With headquarters in Santa Barbara, California, the global hub of thermal imaging innovation, the company has developed breakthrough thermal imaging camera cores that will enable a range of affordable products for use at home, work and play. For more information visit thermal.com and follow #seekthermal on Instagram and @seekthermal on Twitter.